

For all deposition applications, Riber supplies a range of flap type viewport shutters with a linear movement, magnetically coupled actuator for high reliability. The shutters are mounted on double-sided flanges, which fit between the viewport and the chamber.



COMPONENTS

THE BEST VIEWPORT SHUTTER ON THE MARKET

- PROTECTS VIEWPORTS FROM HEAT COATING BY EVAPORANTS
- GAS Baffle SHUTTER PROTECTS VIEWPORTS AND RHEED SCREENS AGAINST GASES AND AS₂, SE₂, ETC
- TO FIT ALL STANDARD VIEWPORT SIZES
- MAXIMUM VACUUM INTEGRITY AND RELIABILITY

FEATURES

- Magnetic coupling for the actuator eliminates bellows – reducing the risk of leaks and enhancing reliability
- Strong magnetic coupling assured by using rare earth magnets configured to provide maximum coupling strength
- External magnets need not be removed for bakeouts up to 250°C
- For higher temperature bakeouts, the external magnet can simply be removed; magnets are not used inside the vacuum envelope
- Clear view – the flap type shutter provides a clear and unobstructed view into the UHV chamber
- Linear motion actuator flap type design minimizes the number of moving parts – this, combined with a design that prevents seizing caused by deposited material, guarantees maximum reliability
- Locking screw enables the shutter to be locked into any position; closed, open or partially open

For more informations, please contact:

RIBER - 31, rue Casimir Périer, B.P 70083, 95873 Bezons, France - Tel: +33 (0)1 39 96 65 00 - Fax: +33 (0)1 39 47 45 62 - email: customerservice@riber.com - Internet: www.riber.com

CHOICE OF SHUTTERS

Standard Shutters

Used to protect viewports from excessive heat loads due to substrate heating stages, and from line-of-sight deposition.

Gas Baffle Shutters

Have additional fixes shielding around the edge of the shutter and a more enclosed design to prevent gas reaching the viewport. This type of shutter significantly reduces coating of viewports in systems using cracker cells or CBE.

RHEED Screen Shutters

Both standard or gas baffle shutters are available to protect RHEED screens. The RHEED screen and shutter are mounted on the same double-sided flange assembly. This assembly can be supplied either with or without the phosphor coated lead glass screen and retaining clamp.

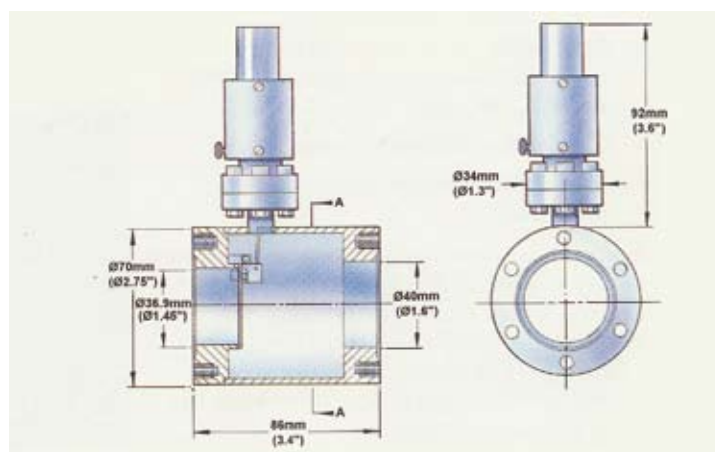
Pneumatic Actuation

All viewport shutters can be fitted with a pneumatic actuator for remote operation, which must be removed for bakeout.

ORDER CODES

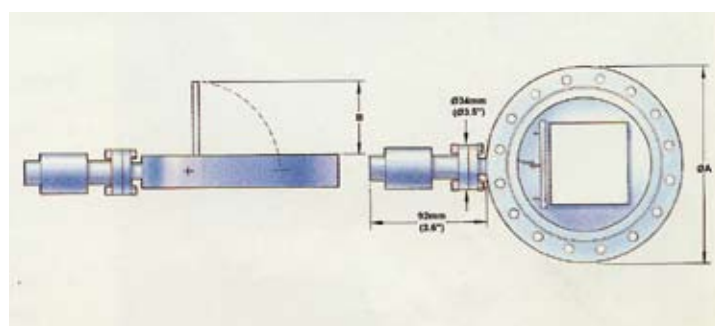
DIMENSIONS

Order Code	To Fit Viewport	Flange OD Ø
VPZ38 Viewport Shutter		
704-38-060	VPZ38	70mm (2.75")



VPZ38 Viewport Shutter

Order Code	To Fit Viewport	Flange OD Ø A	Ø B
Gas Baffle Viewport Shutters			
704-38-114	VPZ64	114mm (4.5")	43mm (1.7")
704-38-101	VPZ100	152mm (6")	57mm (2.3")
704-38-112	VPZ150	203mm (8")	94mm (3.6")



Gas Baffle Viewport and RHEED Screen Shutters

Gas Baffle RHEED Screen Shutters (including screen)			
704-38-144	VPZ100	152mm (6")	57mm (2.3")
704-38-145	VPZ150	203mm (8")	94mm (3.6")

Gas Baffle RHEED Screen Shutters (excluding screen)			
704-38-102	VPZ100	152mm (6")	57mm (2.3")
704-38-113	VPZ150	203mm (8")	94mm (3.6")

Pneumatic Actuator (for any Shutter)

704-38-150