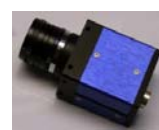
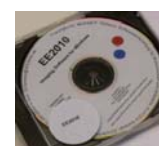
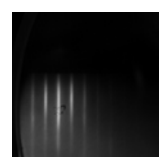
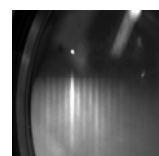
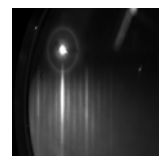
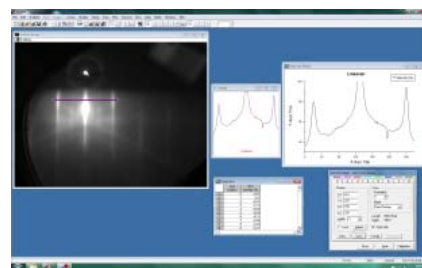
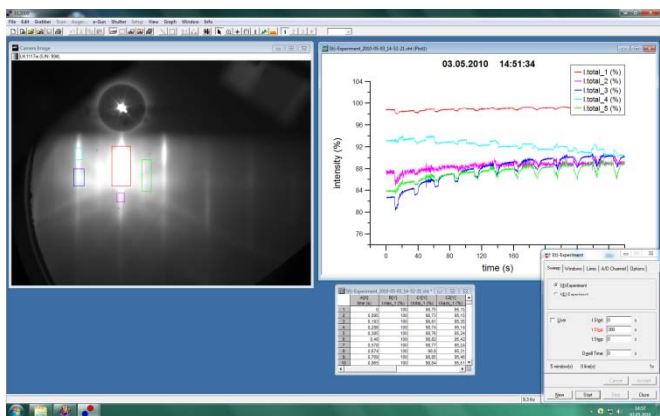


RHEED Oscillation EE2010-USB

The RHEED Oscillation software and hardware EE2010-USB is available for RHEED and LEED data acquisition and analysis.*

The plug&play EE2010-USB RHEED comprises the software on CD ROM, a users manual, a high resolution USB camera and a USB dongle. It offers all modern features for image acquisition and real time in situ data analysis as well as ex situ data treatment. A desktop PC or notebook with minimum two free USB II ports is needed in addition.



All screen dumps courtesy of T. Schupp, Univ. of Paderborn, and J. Schörmann, Univ. of Giessen

Some main features include:

- Data acquisition with 16 bit resolution (internal 32 bit)
- Automatic detection of brightest spots
- Manual choice of spot and size for measurements
- Graphic display of intensity profiles (RHEED oscillation)
- In situ growth rate calculation
- Line scans
- VTR (video type recorder)
- Dynamic change functions
- Histogram
- Filters
- Distance and angle measurements
- Worksheet functions
- Worksheet Math Menu (FFT, Lorentzian and Gaussian, Peak-fit, etc.)
- plus many other functions

*This product note describes the RHEED version only.

[For further information please ask us:](#)